

# Grocery Anchored New Development

Retail, Medical, Daycare and Restaurant Space

# For Lease

7.65 Acre Commercial Mixed Use, Airdrie, Alberta

Possession Q2 2028





jll.com

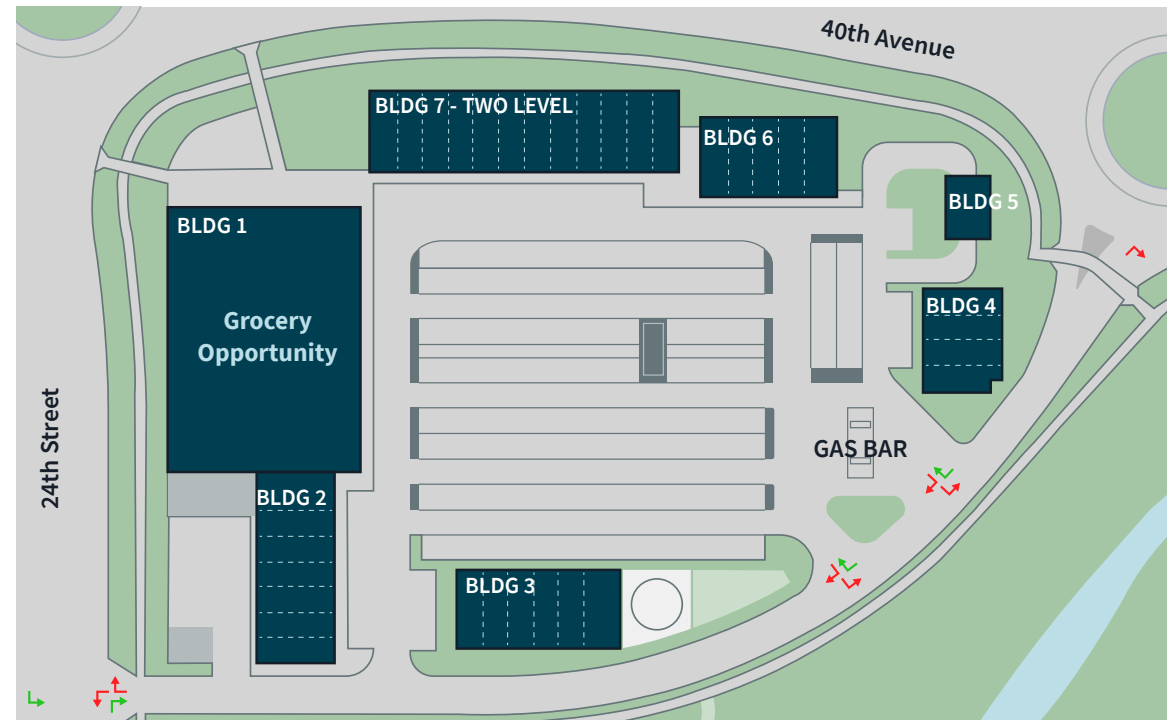
# Property highlights

Located in the primary growth area of one of the fastest growing cities in Canada, the site is near to the new 1,800 student high school, SW recreation centre that will draw an estimated 1 million annual visits, and new residential development with an average annual household income of \$177,000 by 2030.

1,000 - 30,000 sq. ft. spaces available, with drive through opportunities and patios available. Located along a regional pathway, and environmental reserve that provides connection to adjacent residential neighborhoods. Ideal location for grocery, gas and c-store, daycares, early childhood development, banks, medical clinics, restaurants and personal services.

 Strategic placement within walking distance of major community amenities including new schools and new recreation facilities, creating a true neighbourhood commercial hub that serves daily needs and lifestyle requirements.

 Site plan designed to cater to residents needs and to enhance the customer experience. The centre provides efficient and functional layouts for tenants with excellent visibility and traffic flow.



\*Site plan size, distribution and/or location of CRUs may be subject to change

## Location

- Airdrie is a city that has undergone tremendous growth of 45% in the past 10 years, with southwest Airdrie expected to continue to grow at 6% annually
- The Southwest Regional Centre launches Q4 2028 with an aquatics center and outdoor play area, serving southwest Airdrie's growing communities with future phases planned, and an estimated 1 million annual visits at full operations.
- Situated in the corner of 24<sup>th</sup> Street and 40th Avenue in Southwest Airdrie with a projected 22,000 to 24,000 Vehicles Per Day by full build out
- Direct proximity to new K-9 school (Q3 2027) and Southwest High School (Q3 2029), creating consistent traffic and community anchors

### Potential unit sizes\*

<b>BLDG 1</b>	30,000 SF
<b>BLDG 2</b>	8,500 SF
<b>BLDG 3</b>	7,500 SF
<b>BLDG 4</b>	4,500 SF
<b>BLDG 5</b>	1,500 SF   car wash
<b>BLDG 6</b>	6,000 SF
<b>BLDG 7</b>	14,000 SF (Main Floor) ± 14K Daycare (2 <sup>nd</sup> Floor)



Where demographic growth meets infrastructure investment, commercial success follows. Southwest Airdrie offers the perfect combination of young families, community amenities, high traffic volumes, and superior retail opportunities. For businesses seeking first class retail and professional space in Alberta's hottest growth market, the fundamentals couldn't be stronger.

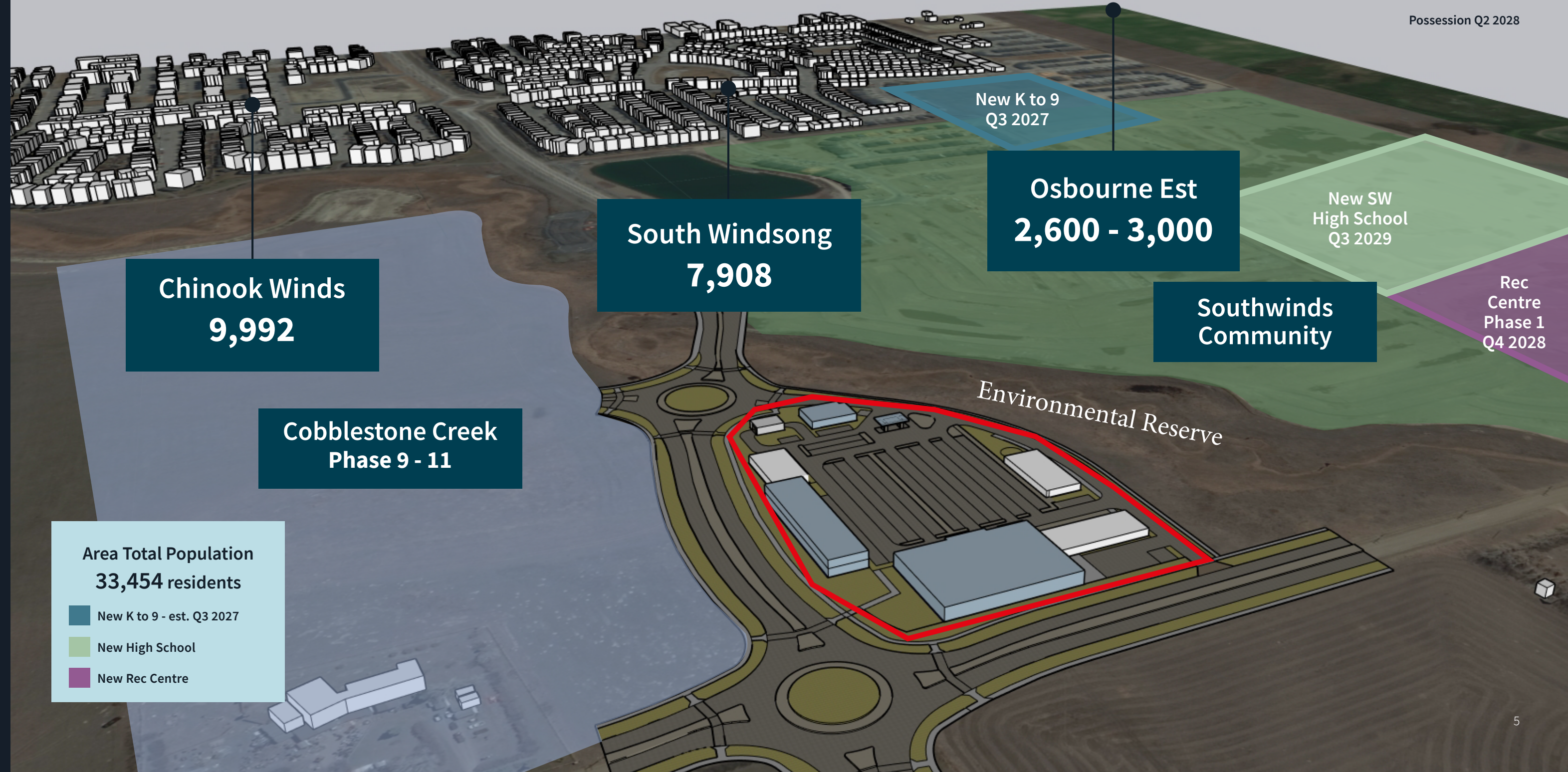


# Demographics

in a 3km radius

	Existing	Est. 2030
Population	33,454	39,656
Total households	10,507	12,681
Average household income	\$166,674	\$177,000
Median Age	34.3	
Total expenditure (average per household)	\$177,551	

Source: Statistics Canada, 2026



# Neighborhood Points of interest

- 1 Primary Corner of two new arterial roads, 40th Ave SW and 24th St SW
- 2 New K to 9 - est. Q3 2027
- 3 Windsong Heights School
- 4 New South Airdrie Rec Center
- 5 New 1,800 student High School



# Regional Points of interest

- 1 Downtown Airdrie (10 min)
- 2 CrossIron Mills (12 min)
- 3 Balzac Industrial Node (15 min)
- 4 Highland Park (17 min) Industrial Area
- 5 East Points (13 min) Industrial Area



## Broker contact information:

**Ron Odagaki**

*Associate Vice President*

+1 403 456 3245

ron.odagaki@jll.com

**Lauren Yanick**

*Associate*

+1 250 650 5705

lauren.yanick@jll.com

Although information has been obtained from sources deemed reliable, JLL does not make any guarantees, warranties or representations, express or implied, as to the completeness or accuracy as to the information contained herein. Any projections, opinions, assumptions or estimates used are for example only. There differences between projected and actual results, and those differences material. JLL does not accept any liability for any loss or damage suffered by any party resulting from reliance on this information. If the recipient of this information has signed a confidentiality agreement with JLL regarding this matter, this information is subject to the terms of that agreement. ©2026 Jones Lang LaSalle Brokerage, Inc. All rights reserved.



[jll.com](http://jll.com)